

Results for the INTERFROST Benchmark TH2 & TH3



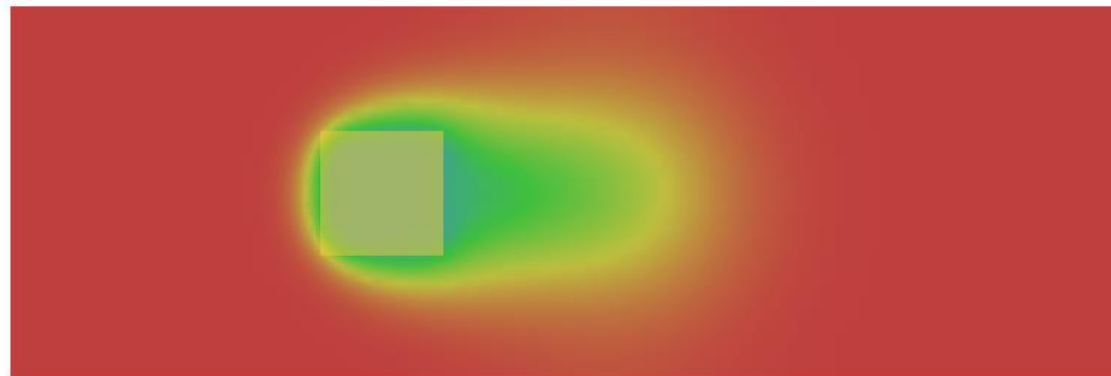
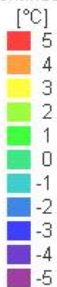
TECHNISCHE
UNIVERSITÄT
DARMSTADT

Hauke Anbergen, Wolfram Rühaak

Institute of Applied Geosciences, Department of Geothermal Science and Technology
Darmstadt Graduate School of Excellence Energy Science and Engineering

APS GmbH – Wille Geotechnik

Temperature
- Continuous -



FEFLOW (R)

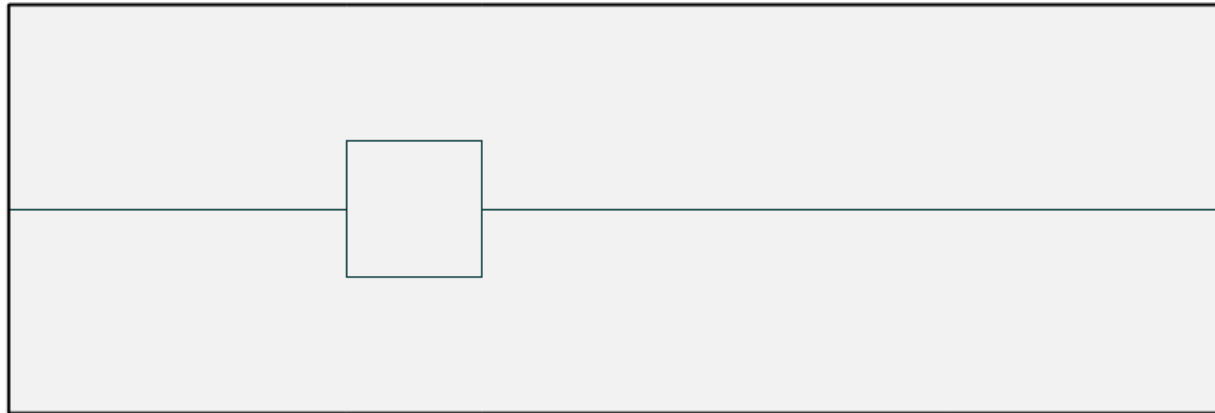
3704 elements selected
8640 [s]



Results TH2

- FEFLOW 6.1
- Formulas from the datasheet implemented accordingly
- Thermo dispersion set to 0

Temp BC set to 5 °C
Hydraulic head
(1.00, 1.09, 1.27, 1.45 m)



Hydraulic head (1.00 m)

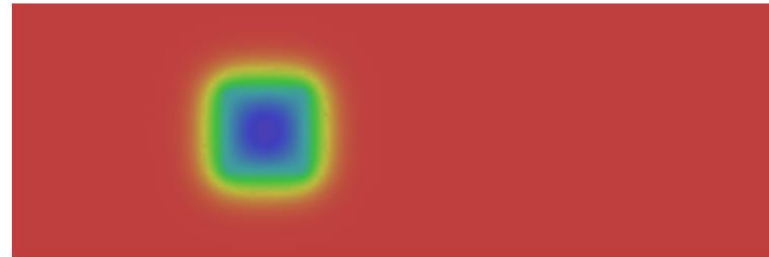
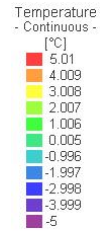


FEFLOW (R)

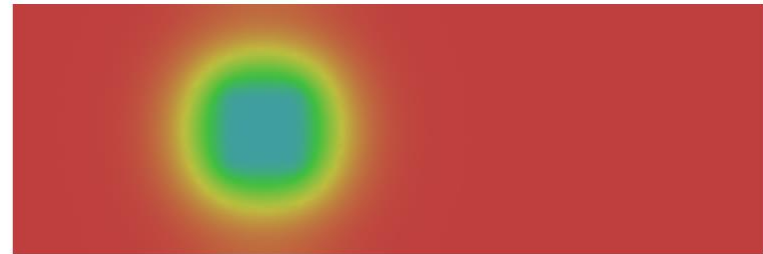
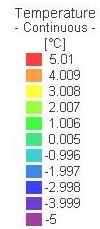
0 0.15 0.3
[m]

Results TH2, $\Delta H = 0.00$

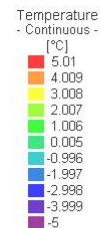
0.02 d



0.1 d

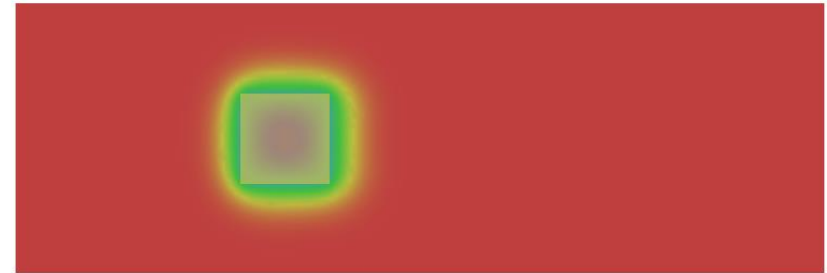


1 d

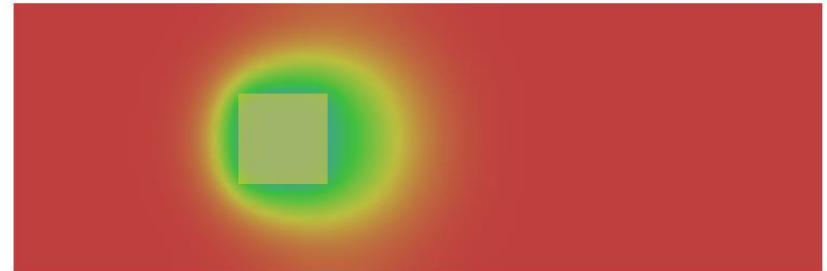


Results TH2, $\Delta H = 0.03$

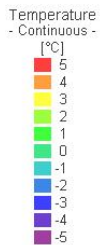
0.02 d



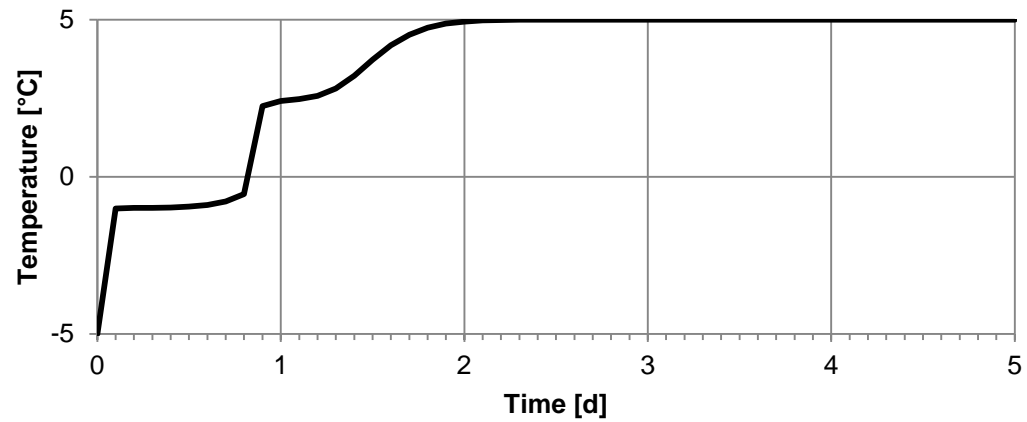
0.1 d



1 d

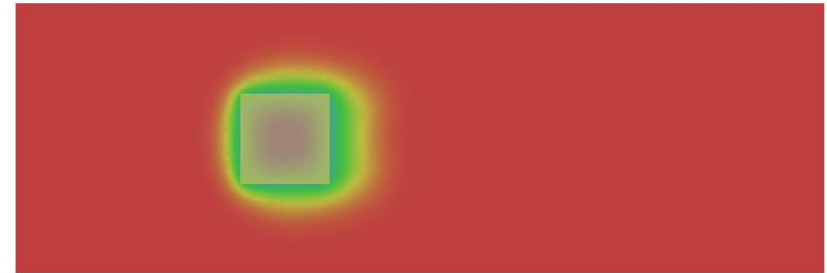


Results TH2, $\Delta H = 0.03$

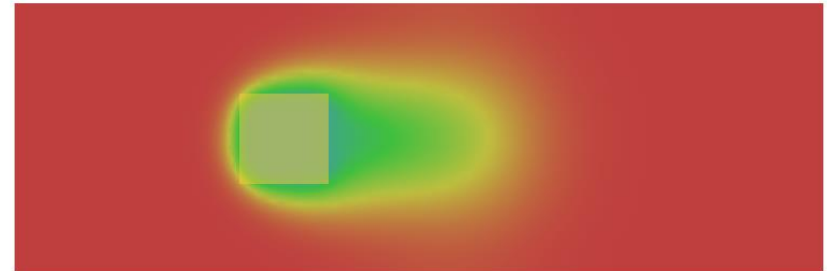


Results TH2, $\Delta H = 0.09$

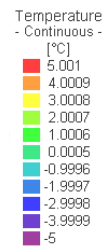
0.02 d



0.1 d

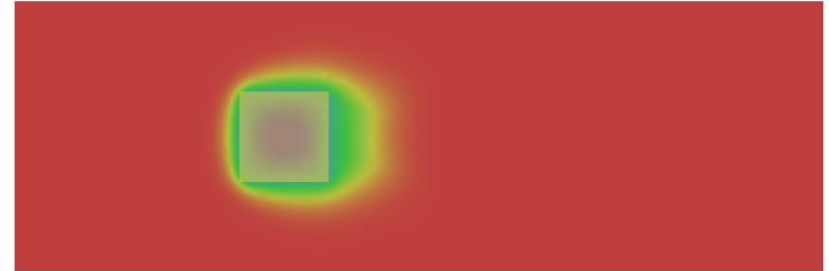
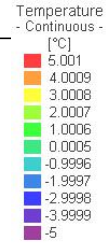


1 d

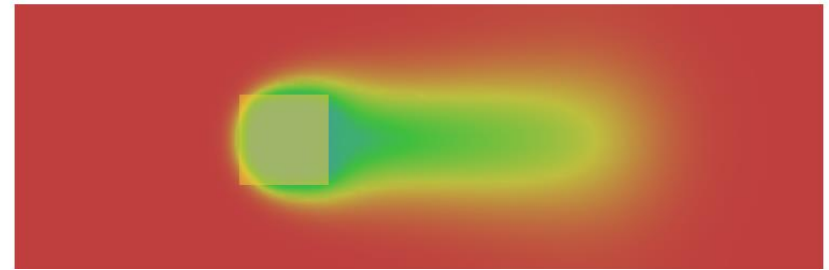
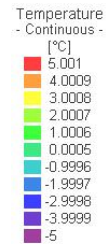


Results TH2, deltaH = 0.15

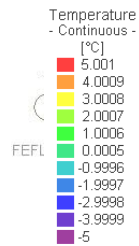
0.02 d

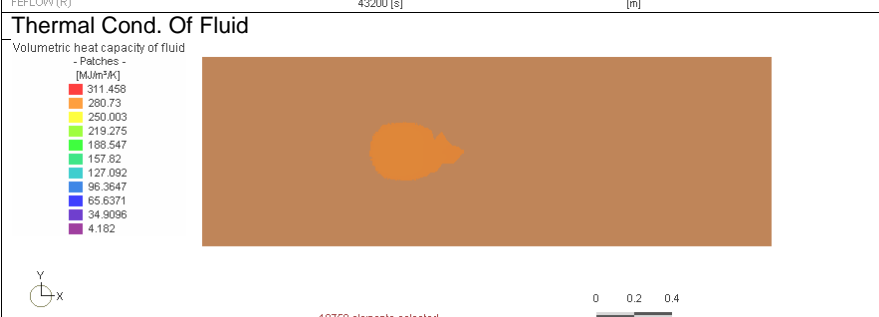
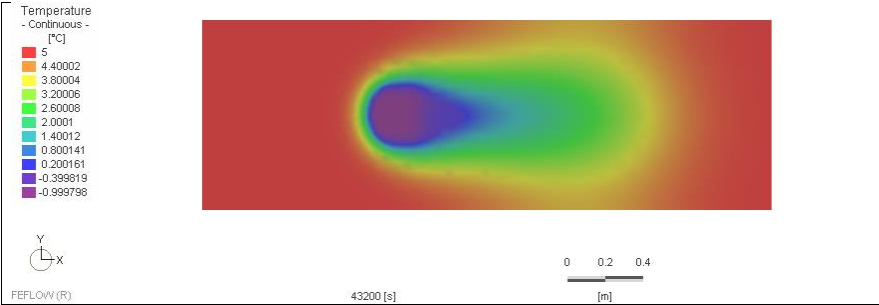


0.1 d

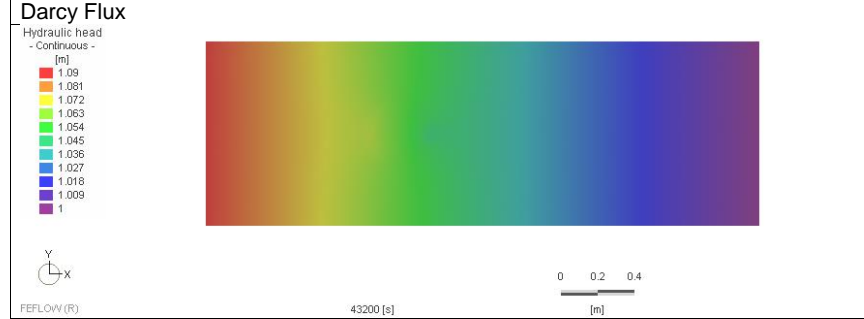
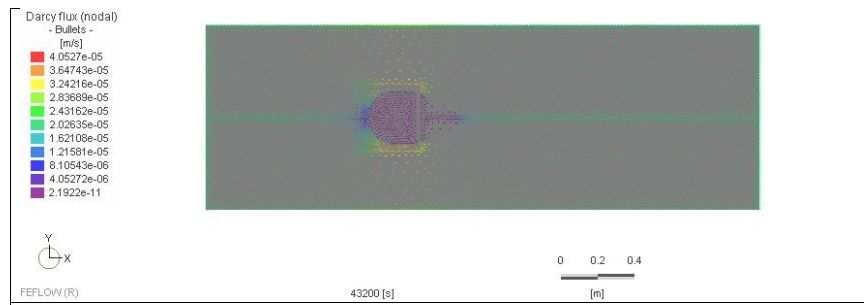


1 d





Hydr. Conductivity

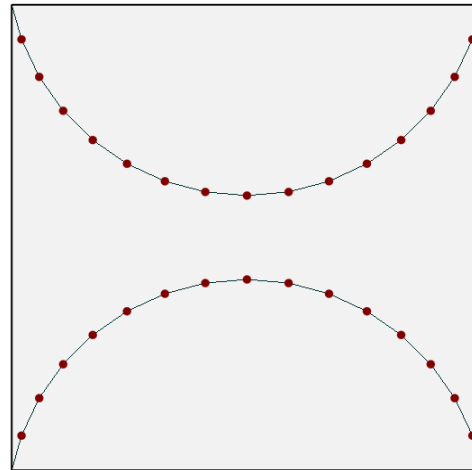


Hydraulic Head

Material properties are modified accordingly.

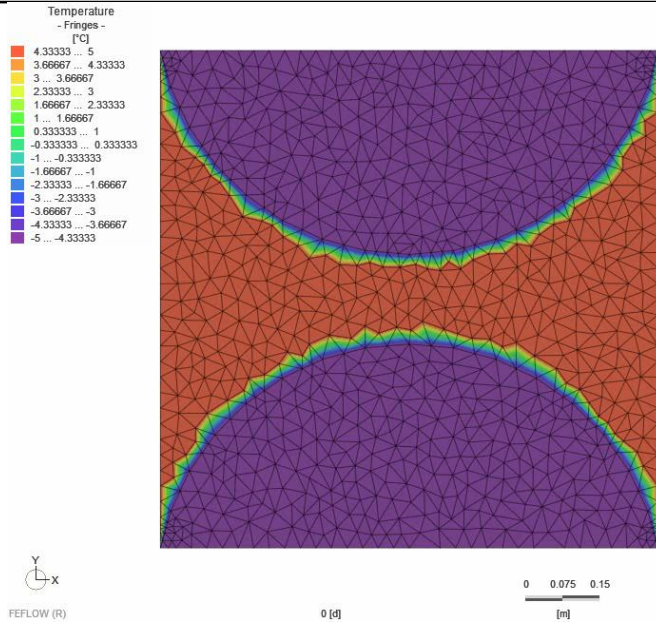
Results TH3

- **FEFLOW 6.0 with Automatic Mesh Refinement (AMR)**
- **The IFM plug-in controls**
 - if element is with the freezing range (here between 0 and -1 degree C) and
 - if the elements size is not smaller than $5E-6 \text{ m}^2$;
- if so refinement is applied;
- otherwise derefinement maybe assigned or element size is kept

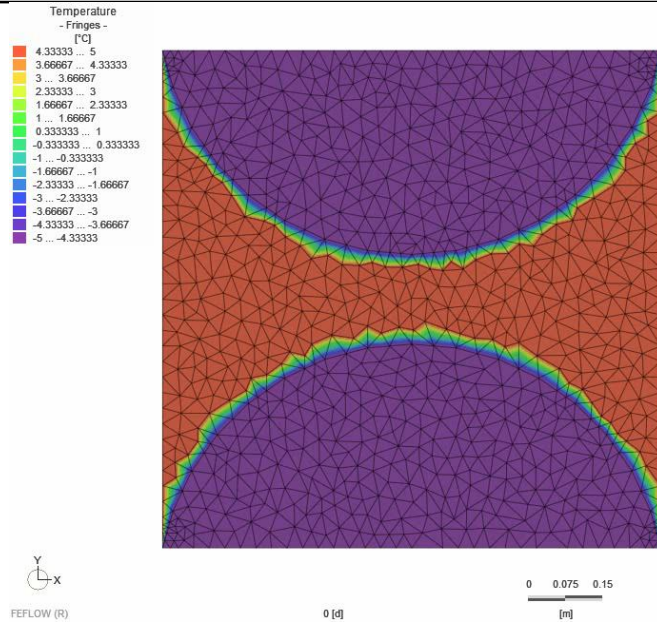


0 0.075 0.15
[m]

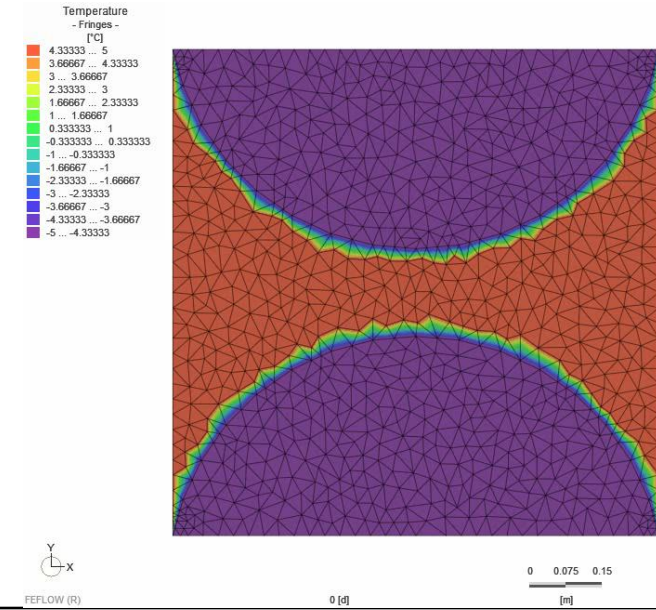
gradient = 0



gradient = 0.03



gradient = 0.09



gradient = 0.15

