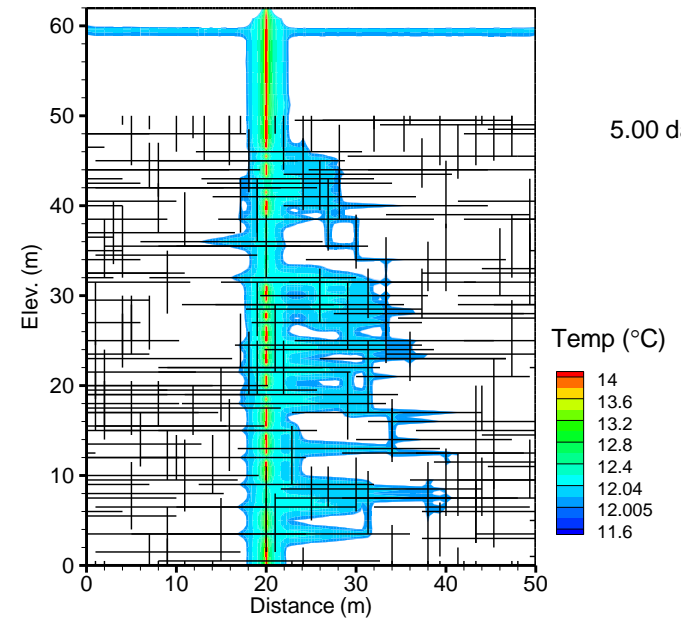
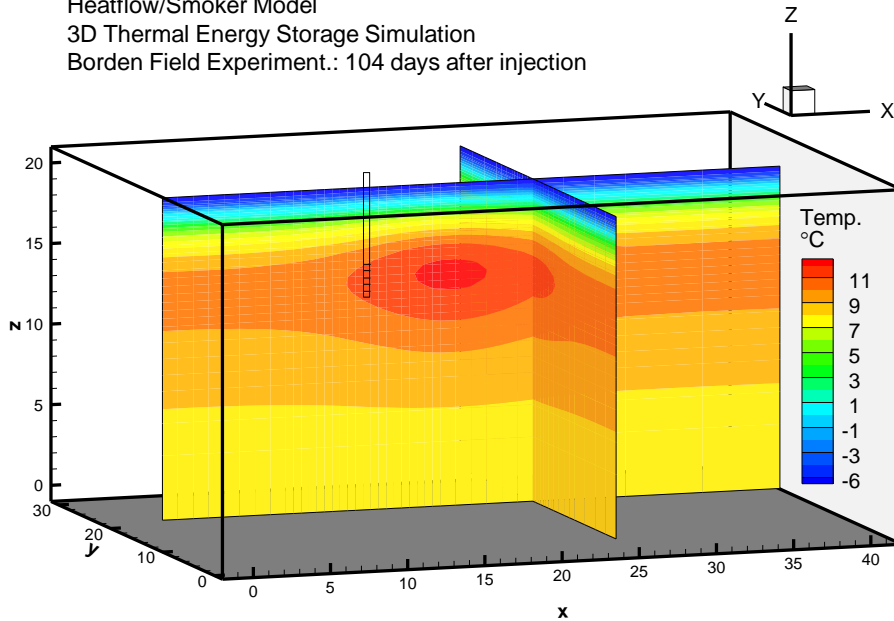


Model Benchmarks

HEATFLOW/SMOKER Model

Heatflow/Smoker Model
3D Thermal Energy Storage Simulation
Borden Field Experiment.: 104 days after injection

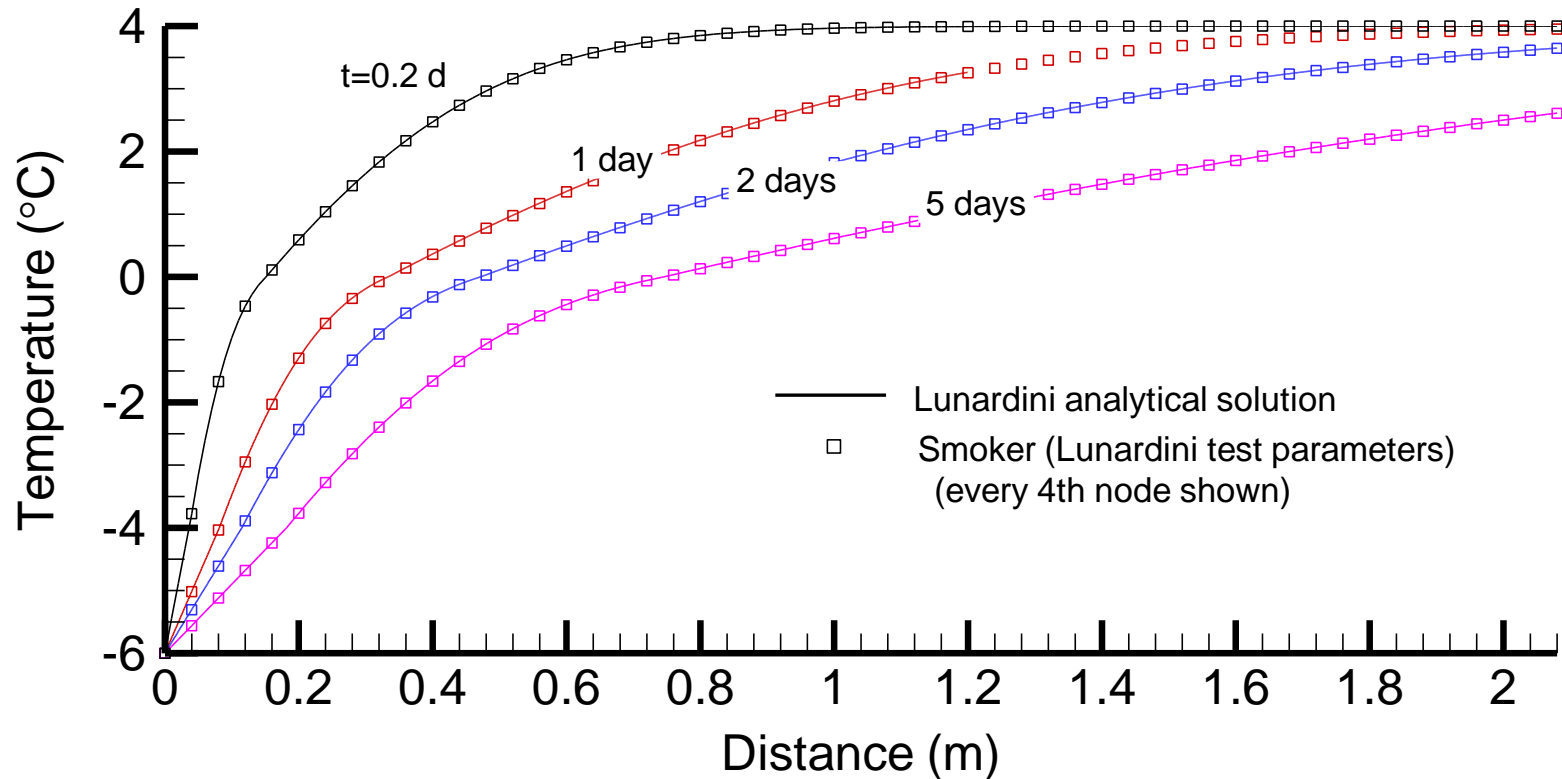
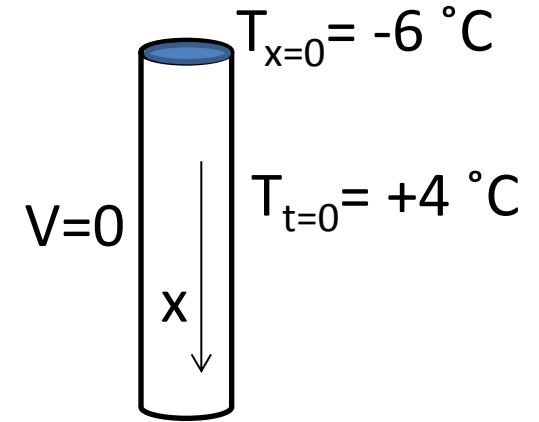


Model Benchmarks:

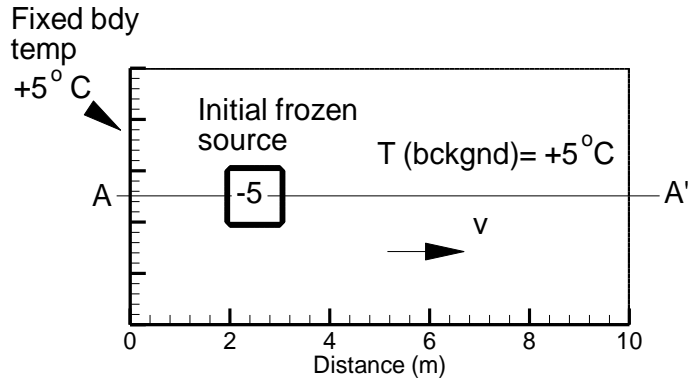
HEATFLOW/SMOKER Model

Validation:

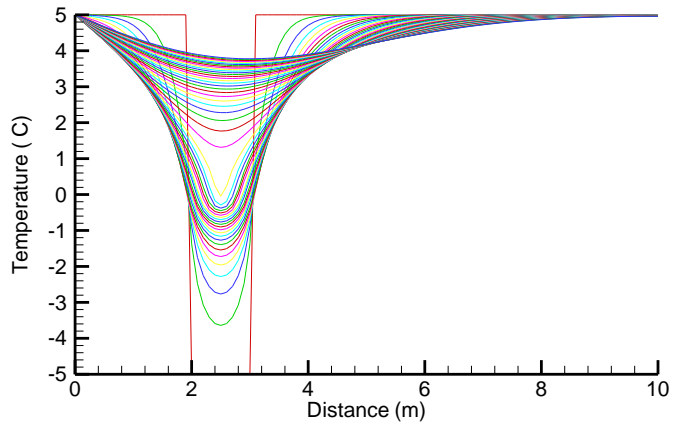
Lunardini (1985) 3-zone solution
programmed by M. Ghias, U. Laval



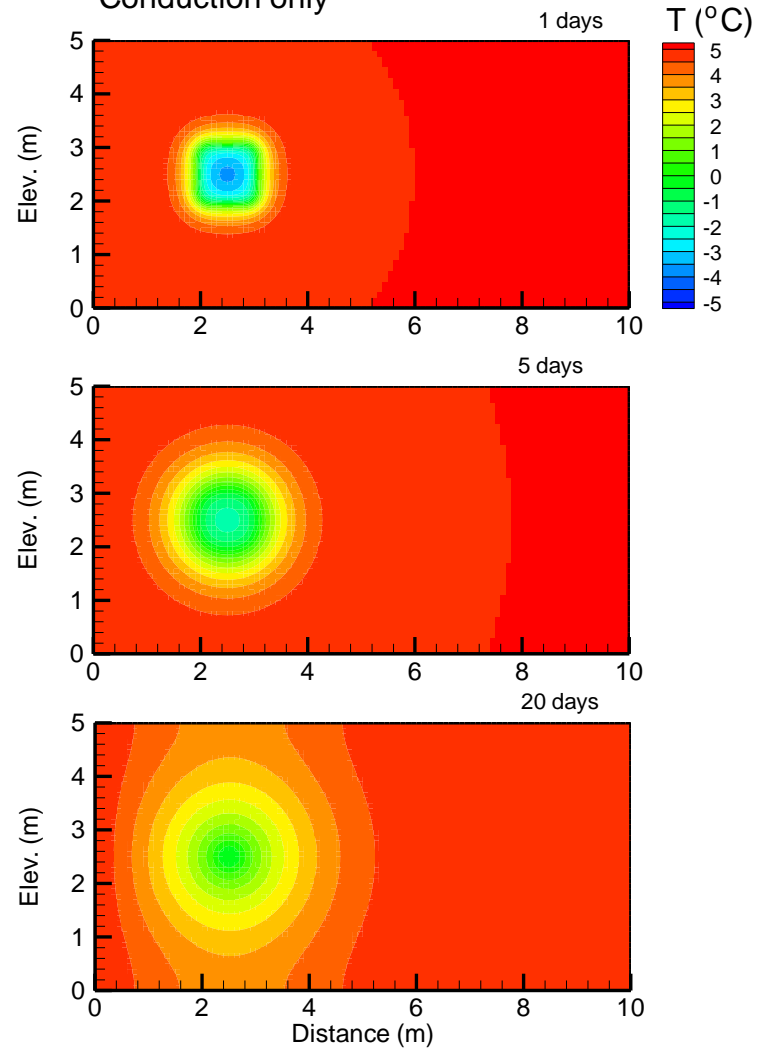
Benchmark TH2
SMOKER Model (Molson & Frind, 2014)



Benchmark TH2
SMOKER Model (Molson & Frind (2014)
Conduction only



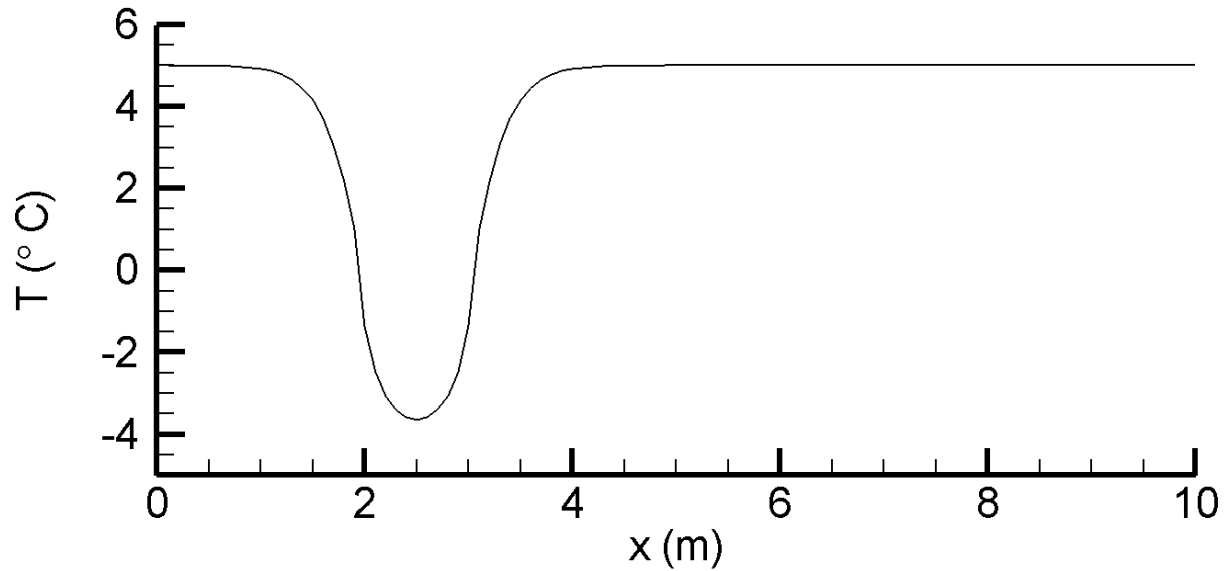
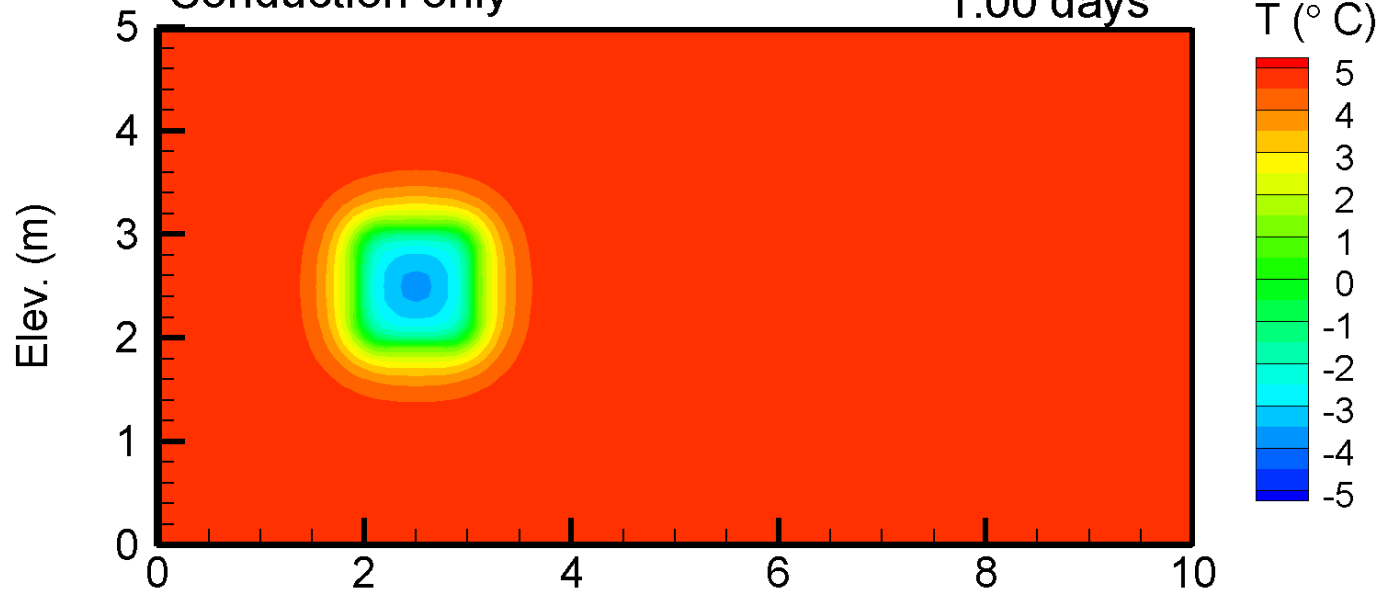
Benchmark TH2
SMOKER Model (Molson & Frind, 2014)
Conduction only



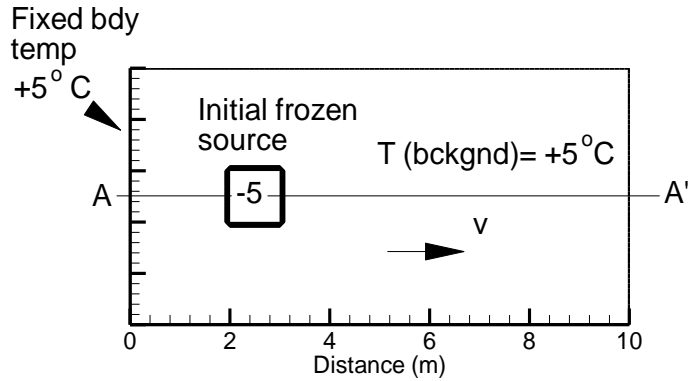
Benchmark TH2
SMOKER Model (Molson & Frind, 2014)

Conduction only

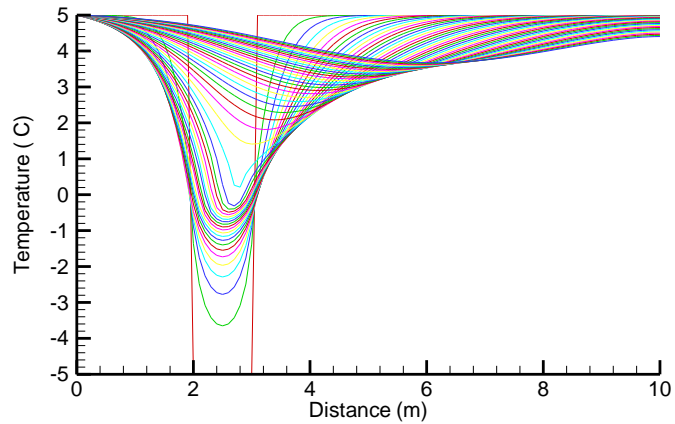
1.00 days



Benchmark TH2
SMOKER Model (Molson & Frind, 2014)

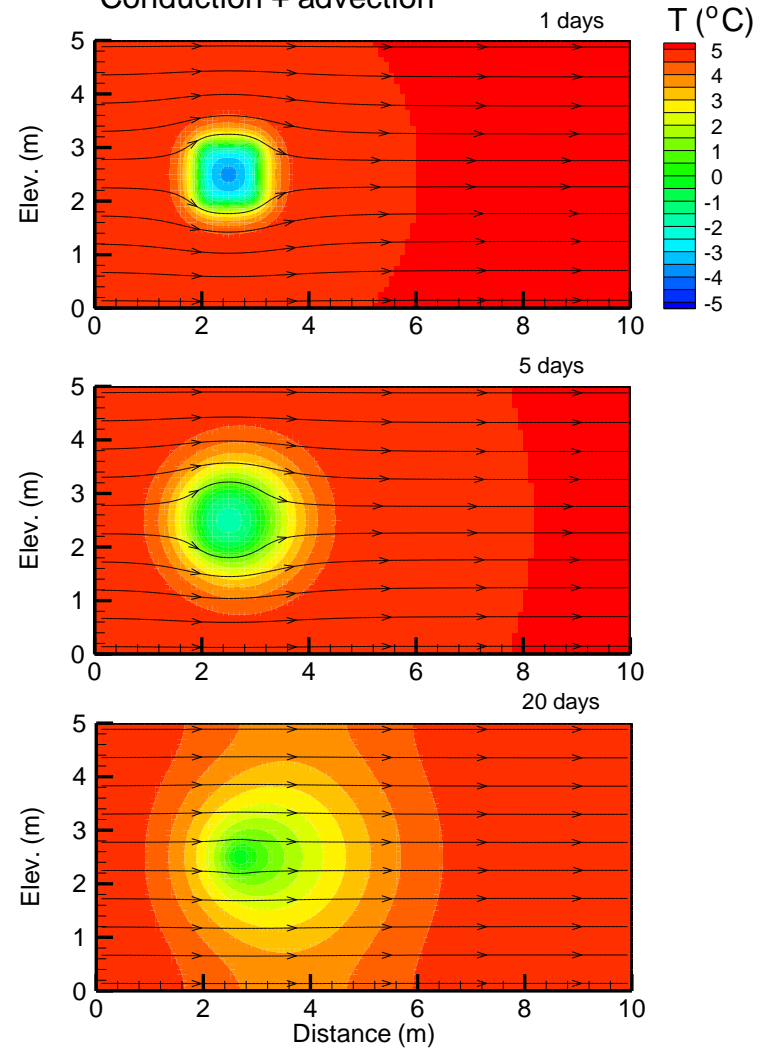


Benchmark TH2
SMOKER Model (Molson & Frind (2014)
Conduction + advection



Benchmark TH2
SMOKER Model (Molson & Frind, 2014)

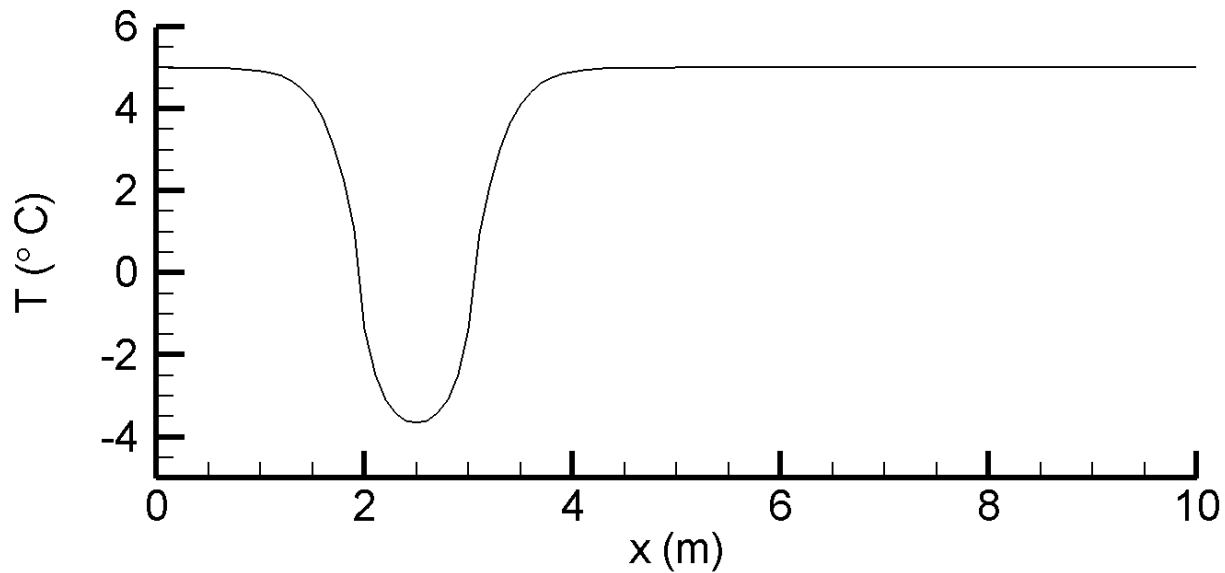
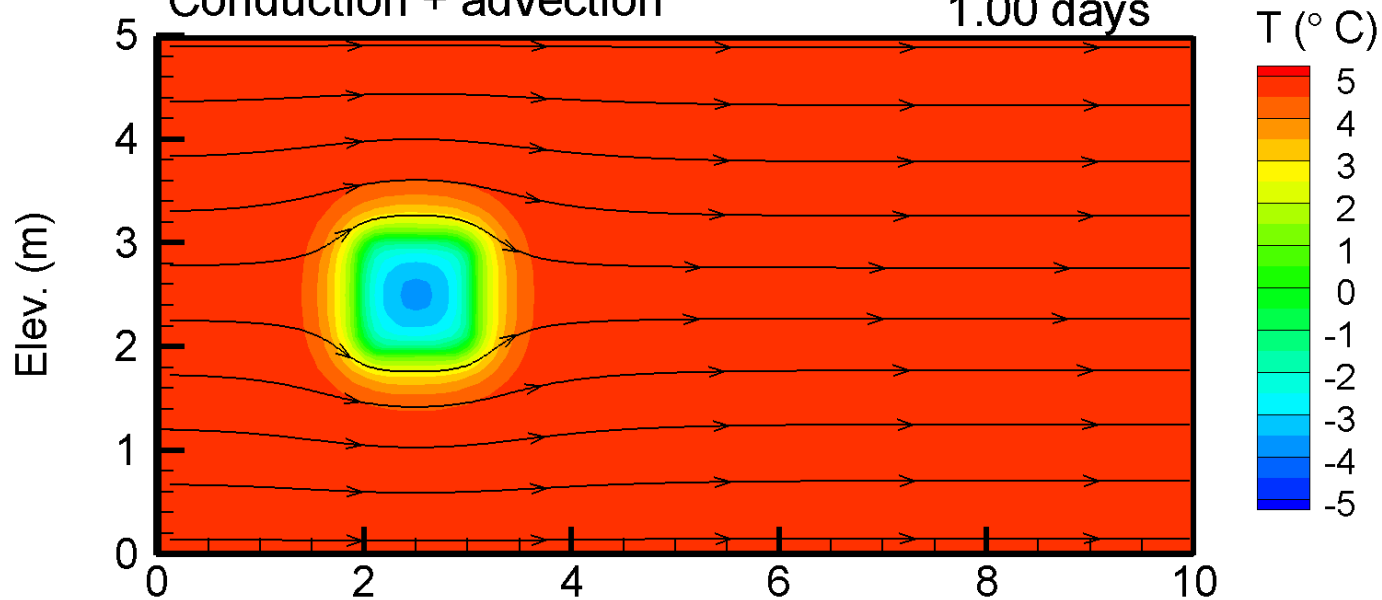
Conduction + advection



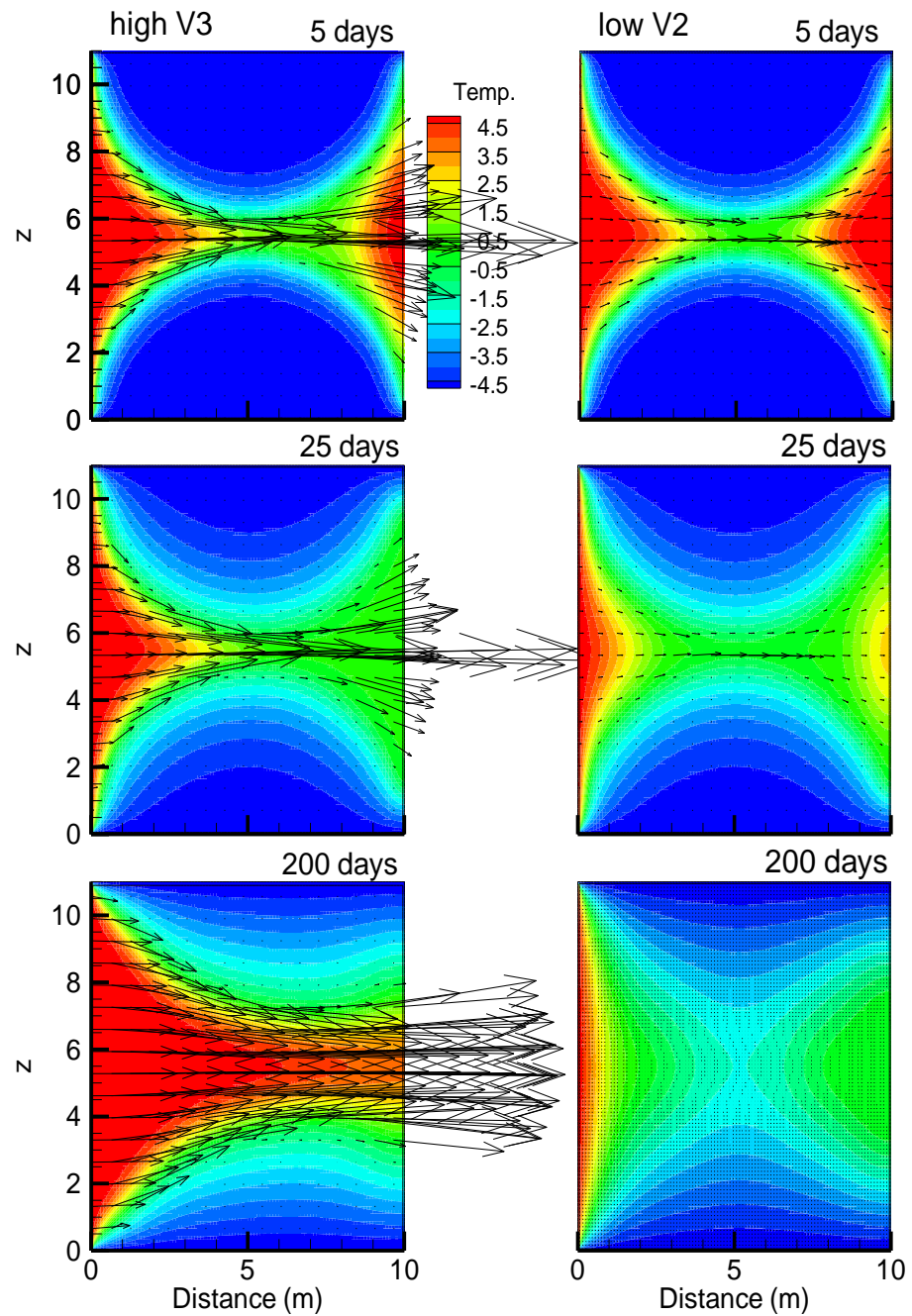
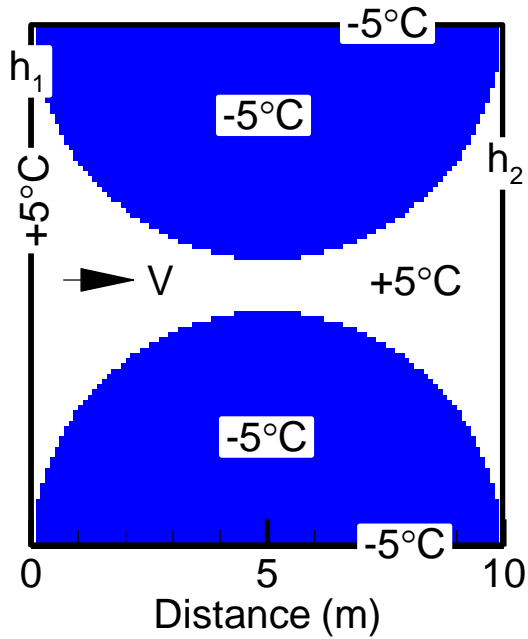
Benchmark TH2
SMOKER Model (Molson & Frind, 2014)

Conduction + advection

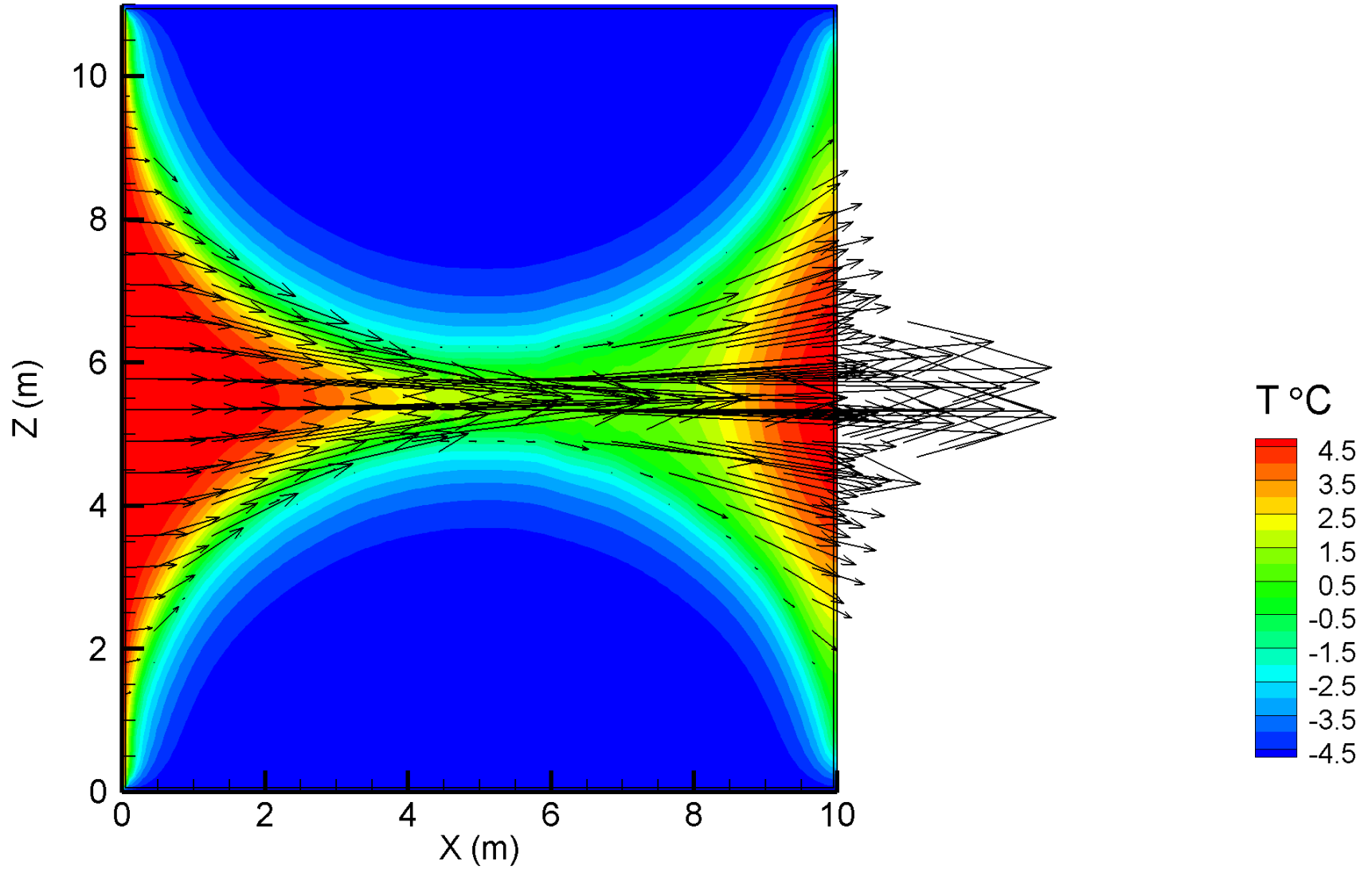
1.00 days



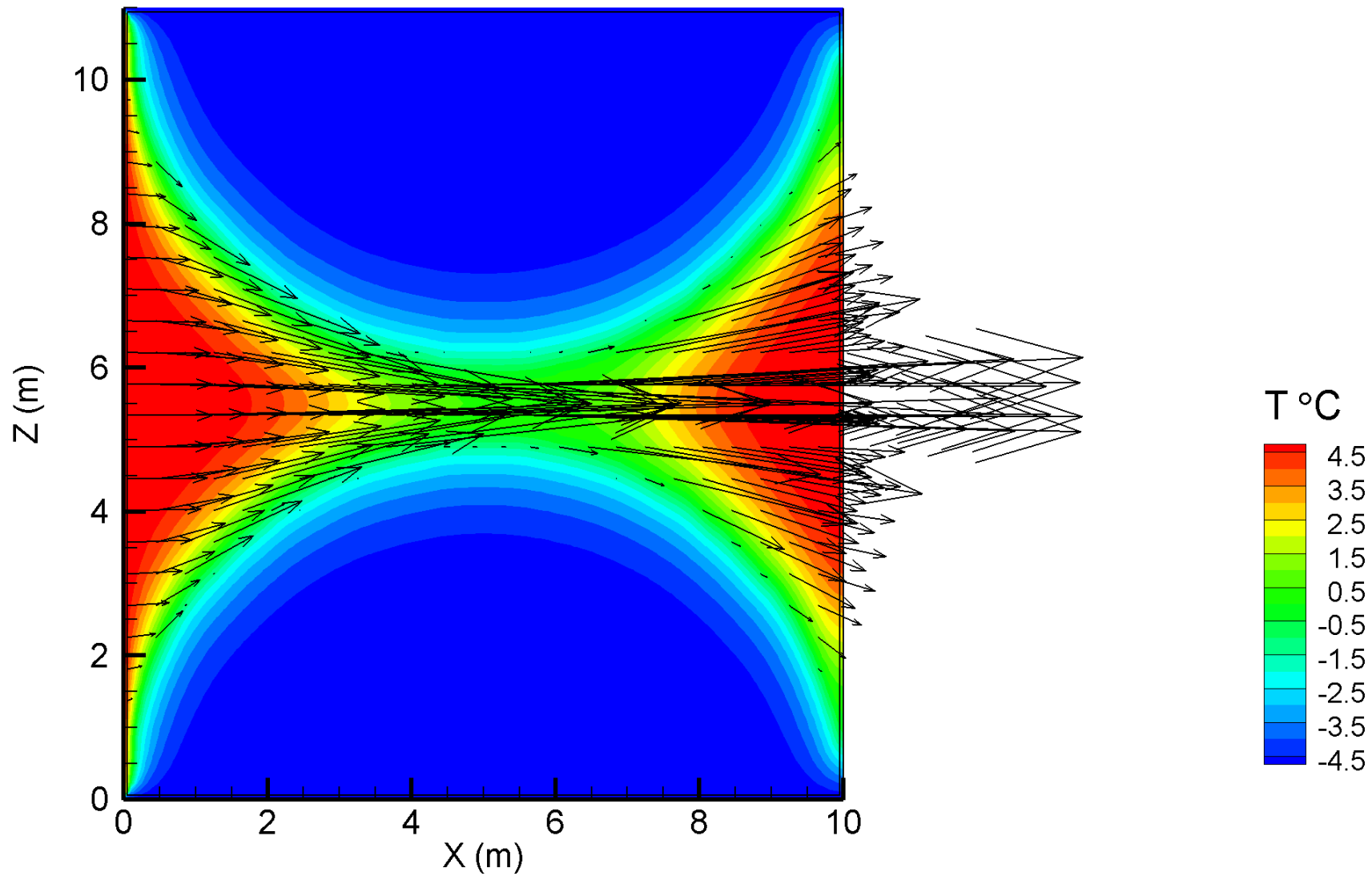
Benchmark TH3 SMOKER Model (Molson & Frind 2014)



0.00 days



0.00 days



Acknowledgements

***Développement durable,
Environnement et Lutte
contre les changements
climatiques***

Québec 

***Fonds de recherche
Nature et
technologies***

Québec 



Canada Foundation
for Innovation

Fondation canadienne
pour l'innovation



**Program of Energy Research and Development (PERD)
Indian & Northern Affairs Canada (INAC)**